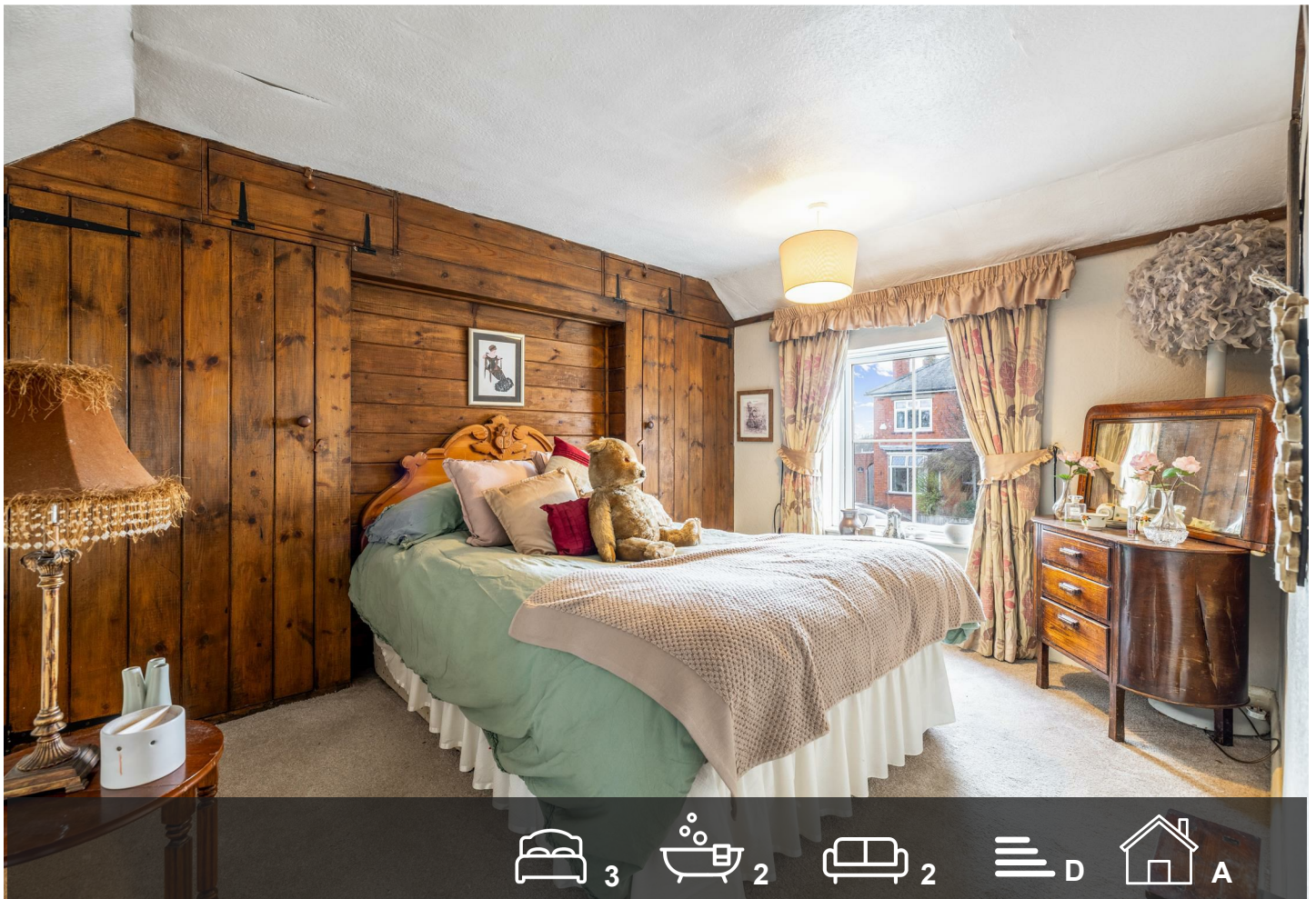


BRUCE MATHER

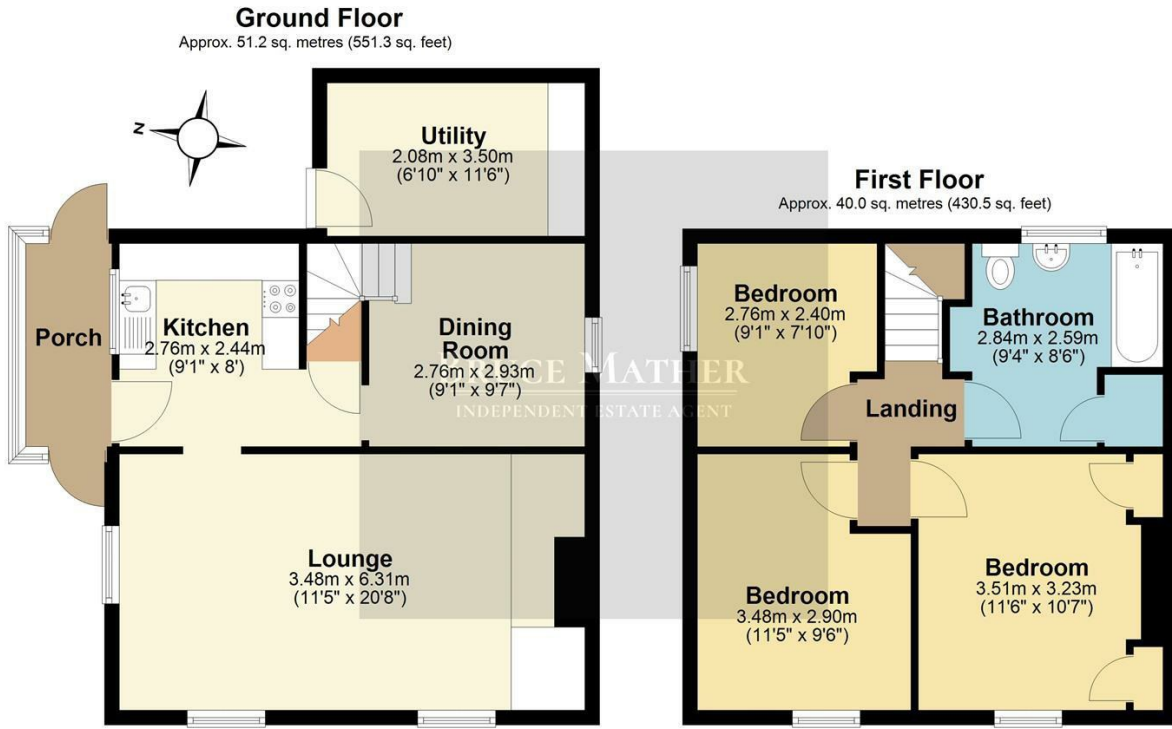
INDEPENDENT ESTATE AGENT



Dene Cottage 11 South Street, Boston, PE20 3JD Offers In The Region Of £200,000

A quaint adorable period three bedroom cottage, garden and parking located in the popular village Swineshead, Lincolnshire. This home has a host of period features throughout the cottage; there are 3 bedrooms upstairs, the biggest having built in storage, plus a family bathroom, downstairs there is a front porch leading into the kitchen, lounge with a fire, dining room and a separate utility room/storage. The garden is manageable with a mix of beds and lawn with an area to park at the end. Swineshead is a very popular village with several shops, doctors, school, Co-op and pubs. Please call Bruce Mather Estate Agents on 01205365032 to view this charming house.

Floor Plan

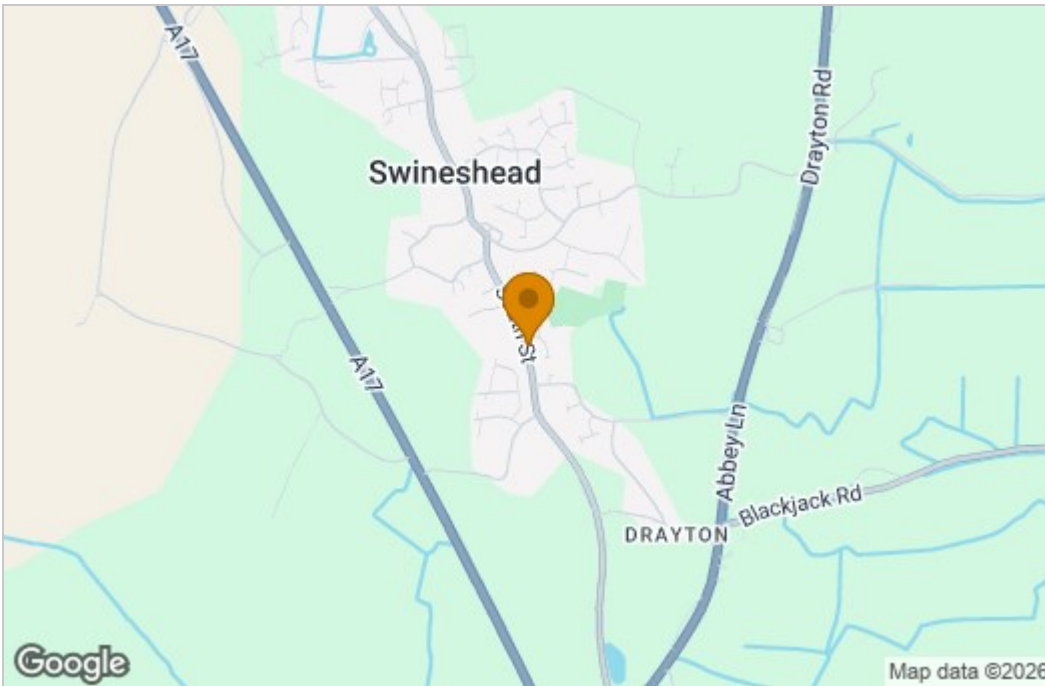


Total area: approx. 91.2 sq. metres (981.8 sq. feet)

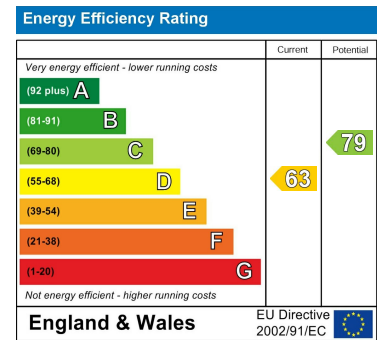
All images used are for illustrative purposes. Images are for guidance only and may not necessarily represent a true and accurate depiction of the condition of property. Floor plans are intended to give an indication of the layout only. All images, floor plans and dimensions are not intended to form part any contract.
Plan produced using PlanUp.



Area Map



Energy Efficiency Graph



These particulars, whilst believed to be accurate are set out as a general outline only for guidance and do not constitute any part of an offer or contract. Intending purchasers should not rely on them as statements of representation of fact, but must satisfy themselves by inspection or otherwise as to their accuracy. No person in this firm's employment has the authority to make or give any representation or warranty in respect of the property.